

Little River 12-Mile Paddle

Trip Time

Obviously trip times will vary by the number/lengths of stops you take and the flow of the river. Looking over several past trips tracked via the Gaia GPS prove the trip can take from as little as three and a half hours up to as much as six hours.

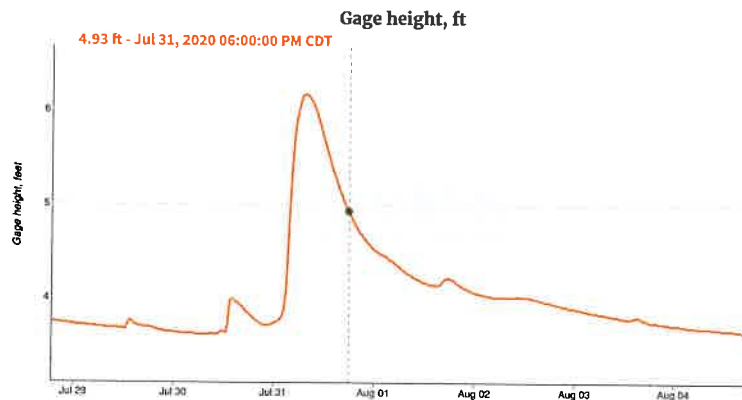
River Conditions

Before a trip on any river, a safe paddler should check the river conditions. This leg of the Little River has a USGS gauge on the bridge five miles down stream from the take out location. (End of the five mile paddle).

The data from this gauge can be found at:

<https://waterdata.usgs.gov/monitoring-location/03438000/#parameterCode=00065>

Once on the page, you'll see several charts. One of the important ones is the Gage height. This indicates the depth of the water at the gage. Our personal experience tells us that the lowest gage reading for a smooth trip and minimal contact with the bottom is 3.8 feet. Caution should be used when the river's Gage



is 4.6 feet or higher as as these heights, the river loses its curves and rapids and may require more advanced abilities to safely travel the faster water.

PUT-IN



The 12 mile trek on the Little River starts at the intersection of the river and Highway 117 (Gracey Herndon Road). This location has VERY limited parking. One or two vehicles is all that will fit here. It is highly suggested that if a large group goes, all vehicles should be left at the take out location and one shuttle vehicle be left at the put-in.

To get your boat to the river, the top left corner (in the picture below) of the intersection of the river and Gracy Herndon Road is the least intrusive way to the water.

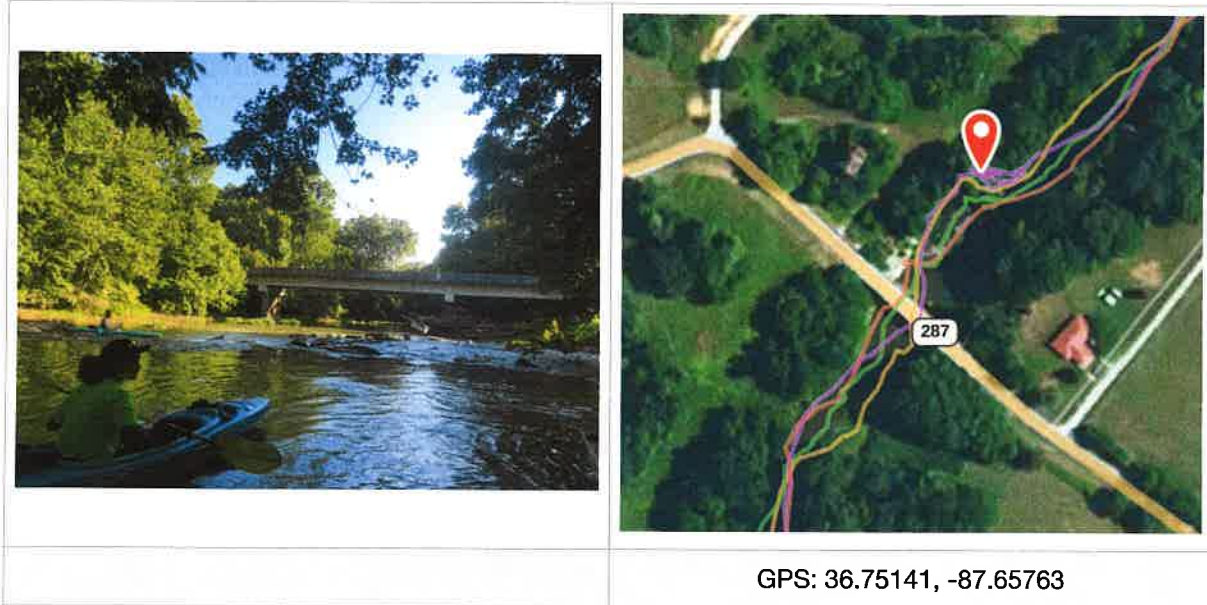
Obviously there is no way to cover every potential hazard on the river as it changes constantly. There are a few places on the river that can present a hazard, depending on conditions and the environment.

The most popular 'hazard' is the dam that has been dismantled. When the dam was destroyed the large rocks that made up the dam still remain.

Potential Hazards

GPS: 36.75485, -87.67252	GPS: 36.74281, -87.57586
	
Take-Out Location	Put-In Location

Be aware this is not an improved entrance. The bank tends to be very steep and slick, large rocks used under the bridge are present. If you have limited mobility, this access is not safe for you to utilize.



As you'll see in the above map, the dam is just north of the Little River and Kentucky Highway 287 intersection.

Paddling Tip: The least intrusive way to traverse the damn is to ensure you paddle river right and choose a route on that side. The drop off goes up from right to left. The left side, depending on water height, could be as much as two feet. Be prepared to potentially get water in your boat. Choose the right path and you'll bounce around a little on the rocks. Choose a more challenging route and you may end up sitting on top of one of the blocks!

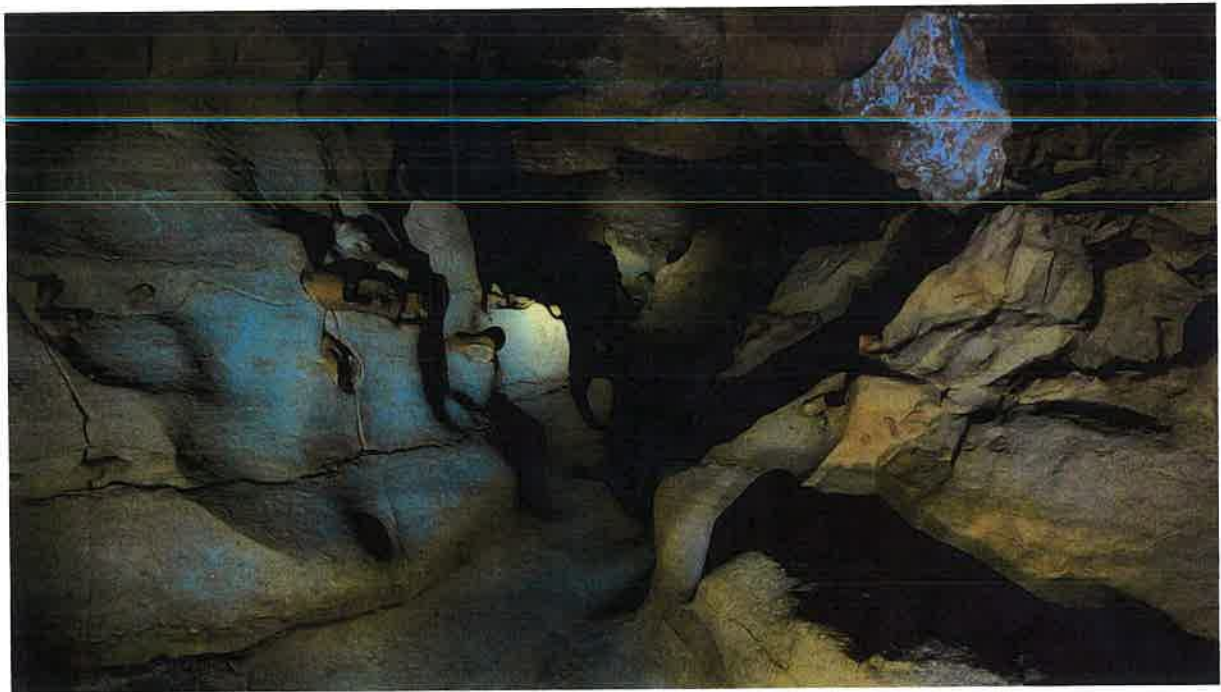
Don't skip this paddle because of this area. It is certainly worth the experience you'll get by going over the destroyed dam. Just proceed cautiously.

Sites to see

There are several small bluffs, large rocks in the river, and many curves with rapids. Over the trip's 12 mile route, you'll descend approximately fifty one feet in total.

There are several cave complexes along this route as well. Some don't go very far or deep while others are hundreds of feet deep and have very interesting formations within them. If you wish to go cave exploring, you are encouraged to do so safely. Helmets, extra flashlights, and a safety line are highly suggested for the deeper cave. Let someone who is not going know what your plans are and your expected arrival time back home will be.

Take-Out



The take out location is much easier to access than the put-in. As you approach the take-out, the river shallows a bit on the left side which allows easier exit of your boat. There is a concrete spill way that runs almost all the way up the hill to the road.

NOTE: At some point this winter (early 2020), a portion of the spillway was washed out and the concrete section dropped approximately a foot and a half. Be careful using this spillway as not only is this a big step, but further up the spillway, small washouts are on either side of the concrete creating hidden holes under the grass/weeds.



Parking at the take out can be much easier to use. Pay attention to the spillway. You'll notice tire tracks leading down the hill to the river. Try not to block this as people will use it for both getting equipment out of the river as well as putting in. This location is the put-in for a five mile paddle.

DISCLAIMER: The above information is compiled from several people, their experiences, and sources. None of those people can be held responsible for the outcome of your trip. The decision to go or not is completely yours. These tips are merely intended to help folks be more familiar with the trip without having to take it. Paddle at your own risk! **Use of PFD's are encouraged and highly recommended.**

If you have any further questions, you will find many helpful people on Facebook [@Western Ky Canoe and Kayak](#).

Pee Dee – Little River – 5 Mile

Location: Christian County, Kentucky, Road 164

GPS: 36.755136, -87.672704

Directions to Access Point: Beginning at I-24, exit and turn south onto Gracey Herndon Road (Hwy 117). Travel south on Gracey Herndon Road (Hwy 117) for 1.4 miles. Turn right (southwest) onto Road 164 (Newstead Road). Travel 4 miles until you cross over the Little River. The put in is on the left (south) side of the road. Carry your boat down the concrete ditch to the river.

Amenities: None

Parking: Room for 5 -10 vehicles on both sides of the road. Do not block the private driveway. Do not block the access for others to drive close to the put in point and load/unload.



Restrictions: No camping.

Safety: Wear your life jacket.
Know your skills and limits.
Be aware of the water level on the Little River.
Wind and weather can create dangerous conditions.
Let someone know where you are going and when you plan to return.

More Information: Visit the Facebook site for Western Ky Canoe and Kayak:
<https://www.facebook.com/groups/756499731077147>

Downstream to the Hardy Road Take-out:

The take-out point at Hardy Road (Road 1253) is approximately 5 miles downstream on the Little River. The take-out is located on river left just before you go under the bridge on Hardy Road. Use the steps to carry your boat up to the parking area.



Time Allotment: 2-3 hours

Trail Description: The Little River flows generally north and west to the take-out. About halfway to the take-out is a cave and large spring on river left. The water flowing from the cave is clear and cold. Most paddlers like to stop here to feel the cold air resulting from the spring water, take a break, and maybe have lunch or a snack. On a hot summers' day the blast of cool, rushing air is very refreshing. Depending on the water level, there are several faster flowing spots on the river, that are fun and that will require your attention to your paddling skills. Please make sure that you pack out any trash that you bring on the river.

Paddlers should pay attention to the numerous trees that have fallen into the river, with many just under the surface of the water.

Wildlife viewing: A variety of birds can be spotted especially during summer months from April through late August.

Natural Features: There is a cave and spring about halfway to the take-out on river left.

Hardy Road – Little River – 10 Mile

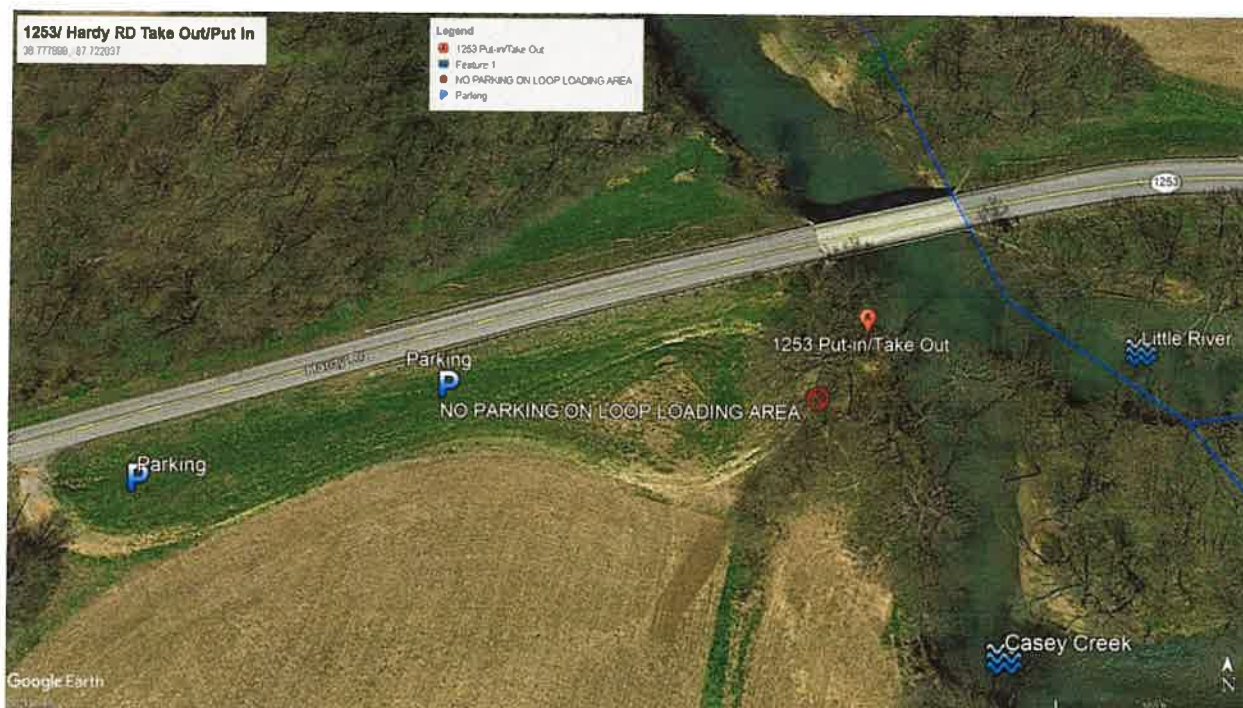
Location: Trigg County, Kentucky, Road 1253

GPS: 36.777899 -87.722037

Directions to Access Point: Beginning at I-24, exit and turn west on Hwy 68/80. Travel west on 68/80 for 6.5 miles and turn left (south) on Road 139 (South Road). Travel 2.2 miles on Road 139 and turn left (east) onto Road 525 (New Hope Road). Travel 6.25 miles on Road 525 and turn left (north) onto road 1253 (Hardy Road). Travel 1.9 miles on Road 1253 and turn right (south) onto a dirt driveway which leads to the put-in. Carry your boat down the steps to the river.

Amenities: None

Parking: Room for 10-15 vehicles along the driveway. Do not park in the loop loading area.



Restrictions: No camping.

Safety: Wear your life jacket.
Know your skills and limits.
Be aware of the water level on the Little River.
Wind and weather can create dangerous conditions.
Let someone know where you are going and when you plan to return.

More Information: Visit the Facebook site for Western Ky Canoe and Kayak:
<https://www.facebook.com/groups/756499731077147>

Downstream to the 272 Take-out:

The take-out point at Road 272 (Caledonia Road) is approximately 10.4 miles downstream on the Little River. The take-out is located on river right just after you go under the bridge on Road 272. Use the concrete ramp to carry your boat up to the parking area.



Time Allotment: 3-4 hours

Trail Description: The Little River flows generally north and west to the take-out. Depending on the water level, there are several faster flowing spots on the river, that are fun and that will require your attention to your paddling skills. There are several places to stop and get out for a few minutes to have a snack or eat lunch. Please make sure that you pack out any trash that you bring on the river.

Paddlers should pay attention to the numerous trees that have fallen into the river, with many just under the surface of the water.

Wildlife viewing: A variety of birds can be spotted especially during summer months from April through late August.

Cultural Features: There is an old bridge abutment along the route.

Natural Features: There are some beautiful limestone cliffs, caves and hanging gardens/springs along the route.

Road 272 – Little River – 1.3 Mile

Location: Trigg County, Kentucky, Road 272

GPS: 36.8407390 -87.7774900

Directions to Access Point: Beginning at I-24, exit and turn west on Hwy 68/80. Travel west on 68/80 for 3.4 miles and turn left (south) on Merchant Street. At the Stop sign turn right (west) onto Merchant Street which turns into Glenwood Mills Road. From the Stop sign travel 2.2 miles and turn left (east) onto Road 272 (Caledonia Road). Travel approximately 0.25 miles on Road 272 and turn left (north) onto the gravel road driveway at the put in. The concrete kayak ramp is on the left of the circle drive. Carry your boat down the ramp to the river.

Amenities: None

Parking: Room for 10-20 vehicles along the driveway and under the bridge. Do not park and block the circle driveway.



Restrictions: No camping.

Safety: Wear your life jacket.
Know your skills and limits.
Be aware of the water level on the Little River.
Wind and weather can create dangerous conditions.
Let someone know where you are going and when you plan to return.

More Information: Visit the Facebook site for Western Ky Canoe and Kayak:

<https://www.facebook.com/groups/756499731077147>

Downstream to the Glenwood Mill Road Take-out:

The take-out point on Glenwood Mill Road is approximately 1.3 miles downstream on the Little River. The take-out is located on river right just after you go under the bridge on Glenwood Mill Road. Carry your boat up the steps to the parking area.



Time Allotment: 1 hour

Trail Description: The Little River flows north, west and then south to the take-out. Please make sure that you pack out any trash that you bring on the river.

Paddlers should pay attention to the numerous trees that have fallen into the river, with many just under the surface of the water.

Wildlife viewing: A variety of birds can be spotted especially during summer months from April through late August.

Glenwood Mill Road – Little River – 4.9 Mile

Location: Trigg County, Kentucky, Glenwood Mill Road

GPS: 36.843519 -87.785372

Directions to Access Point: Beginning at I-24, exit and turn west on Hwy 68/80. Travel west on 68/80 for 3.4 miles and turn left (south) on Merchant Street. At the Stop sign turn right (west) onto Merchant Street which turns into Glenwood Mills Road. From the Stop sign travel 1.75 miles to the parking area on the right (south) just before crossing the bridge. Carry your boat down the steps to the river.

Amenities: None

Parking: Room for 3-5 vehicles.



Restrictions: No camping.

Safety: Wear your life jacket.
Know your skills and limits.
Be aware of the water level on the Little River.
Wind and weather can create dangerous conditions.
Let someone know where you are going and when you plan to return.

More Information: Visit the Facebook site for Western Ky Canoe and Kayak:

<https://www.facebook.com/groups/756499731077147>

Downstream to the West End City Park Take-out:

The take-out point on the south side of the West End City Park is approximately 4.9 miles downstream on the Little River. The take-out is located on river right. Carry your boat up the kayak ramp to the parking area.



Time Allotment: 2-3 hours

Trail Description: The Little River flows downstream to the West End City Park to the take-out. Please make sure that you pack out any trash that you bring on the river.

Paddlers should pay attention to the numerous trees that have fallen into the river, with many just under the surface of the water.

Wildlife viewing: A variety of birds can be spotted especially during summer months from April through late August.

Cultural Features: An old stone bridge abutment is located on river right along the route.

West End City Park – Little River – 8.4 Mile

Location: Trigg County, Kentucky, West End City Park

GPS: 36.858200 -87.839247

Directions to Access Point: Beginning at I-24, exit and turn west on Hwy 68/80. Travel west on 68/80 for 6.5 miles and turn right (north) on Road 139 (South Road). Travel 1.35 miles on Road 139 and turn left on the frontage road approximately 200 feet before you reach the stop light on Main Street. Travel down this frontage road approximately 200 feet and turn left into the parking area at the put in. Carry your boat down the kayak ramp to the river.

Amenities: None

Parking: Room for 5-10 vehicles.



Restrictions: No camping.

Safety: Wear your life jacket.
Know your skills and limits.
Be aware of the water level on the Little River.
Wind and weather can create dangerous conditions.
Let someone know where you are going and when you plan to return.

More Information: Visit the Facebook site for Western Ky Canoe and Kayak: <https://www.facebook.com/groups/756499731077147>

Downstream to the Little River Access Area Take-out:

The take-out point at the Little River Access Area is approximately 8.4 miles downstream on the Little River. The take-out is located on river right. Use the boat ramp to retrieve your boat.



Time Allotment: 4-6 hours

Trail Description: The Little River flows downstream to the Little River Access Area to the take-out. Please make sure that you pack out any trash that you bring on the river. Paddlers should pay attention to the numerous trees that have fallen into the river, with many just under the surface of the water.

Wildlife viewing: A variety of birds can be spotted especially during summer months from April through late August.

Will Jackson Road – Muddy Fork of Little River – 5.4 Mile

Location: Trigg County, Kentucky, Will Jackson Road

GPS: 36.904194 -87.866089

Directions to Access Point: Beginning at I-24, exit and turn west on Hwy 68/80. Travel west on 68/80 for 3.6 miles and turn right onto Main Street. Travel west on Main Street 2.4 miles and turn right on Brown Street. Travel northwest on Brown Street for .25 miles where Brown Street becomes Wallace Avenue. Continue north on Wallace Avenue, which turns into Will Jackson Road, for 3.7 miles and turn right onto the gravel driveway at the access point. The total distance from Main Street to the driveway at the access point is 3.9 miles. Follow the access road straight down to the water. Carry your boat down some crude steps to the water.

Amenities: None

Parking: Room for 3-5 vehicles.



Restrictions: No camping.

Safety: Wear your life jacket.
Know your skills and limits.

Be aware of the water level on the Little River.
Wind and weather can create dangerous conditions.
Let someone know where you are going and when you plan to return.

More Information: Visit the Facebook site for Western Ky Canoe and Kayak:

<https://www.facebook.com/groups/756499731077147>

Downstream to the Little River Access Area Take-out:

The take-out at the Little River Access Area is approximately 5.4 miles downstream on the Muddy Fork of the Little River. The take-out is located on river right. Use the boat ramp to retrieve your boat.



Time Allotment: 2-3 hours

Trail Description: The Muddy Fork of the Little River flows downstream to the Little River Access Area to the take-out. Please make sure that you pack out any trash that you bring on the river.

Paddlers should pay attention to the numerous trees that have fallen into the river, with many just under the surface of the water.

Wildlife viewing: A variety of birds can be spotted especially during summer months from April through late August.